

## nCircle Configuration Compliance Manager™

### Configuration Auditing, File Integrity Monitoring and Change Analysis

Ensuring that systems are always configured properly is critical to both compliance and security initiatives. But gaining visibility into system configurations and their compliance status is a significant challenge, especially with the rapid rate of change in enterprise networks. Additionally, demonstrating to auditors that systems are compliant can be a manual, time consuming project that is inefficient and potentially ineffective.

nCircle Configuration Compliance Manager™ automates enterprise-wide configuration auditing, change analysis and file integrity monitoring, providing continuous visibility into the compliance of IT system configurations and the impact of changes. The integrated policy engine compares actual configurations to internal policy or best practice benchmarks, prioritizing the risk and compliance impact of configuration changes. Automating configuration auditing enables a greater level of security and dramatically reduces preparation time for IT audits conducted for regulations such as Payment Card Industry Data Security Standard (PCI), Sarbanes-Oxley or HIPAA. Configuration Compliance Manager's continuous change-centric process lowers costs and increases uptime by ensuring that systems remain configured in compliance with organizational policies.

### Comprehensive Audit Support

Using innovative agentless technology, Configuration Compliance Manager continuously identifies all IP-enabled systems that are active on a network, including servers, desktops, laptops, routers, switches, and firewalls. The solution then enumerates the applications and configuration of each system, providing detailed information on thousands of configuration variables. Configuration Compliance Manager identifies and assesses virtually everything on the network, from routing table entries and access control lists to Active Directory group policy objects and application misconfigurations, without requiring agent software on the endpoints.

nCircle Configuration Compliance Manager continuously audits each system's configuration and compares any configuration changes with relevant best practice and industry standard policies such as NIST, CIS, and Microsoft. Configuration Compliance Manager also provides policies for specific regulations such as PCI, Sarbanes-Oxley, and HIPAA.

nCircle Configuration Compliance Manager's robust reporting capabilities and web-based dashboards provide details on the compliance of system configurations through a range of customizable reports—from technical reports designed for IT and security teams to compliance framework reports such as CobiT, SAS-70 or ISO 17799—for managerial and audit audiences. The automated reports make preparation for IT audits efficient and comprehensive while the dashboards give administrators a variety of real-time perspectives into the compliance status of every system on the network.

nCircle Configuration Compliance Manager can also be integrated with configuration or change management processes to address any configuration compliance deviations identified. When the solution identifies out-of-compliance configurations or changes it can notify administrators immediately, open trouble tickets and update the CMDB. Further, issues can be prioritized based on the business value of the assets affected.

### Highlights

- Comprehensive network coverage
- Agentless file integrity monitoring including: checksum, change originator, file size, version creation date and modified date
- Sophisticated risk prioritization algorithms identify the most urgent problems
- Flexible reporting and dashboards provide compliance data to the appropriate audience

---

“Unless the configuration of systems can be verified as being in a known state, neither the integrity nor the confidentiality of the data they contain can be trusted.”

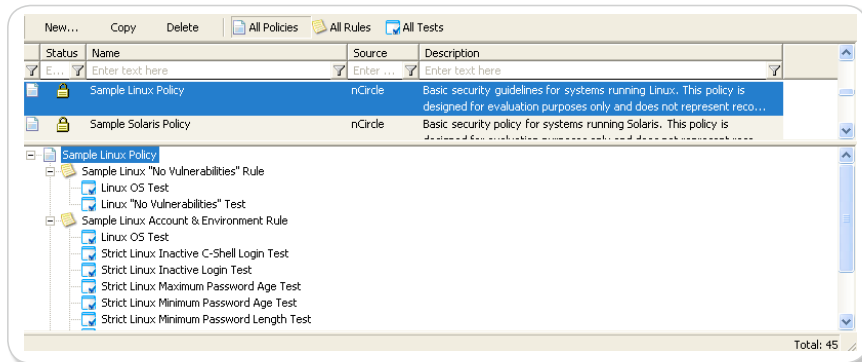
— Gartner, Inc., “Using Configuration Auditing for Compliance Control”  
M. Nicolett, R. Colville, and P. Proctor,  
January 10, 2007

---

## Faster Audit Preparation Through Compliance Management

The nCircle Configuration Compliance Manager agentless configuration auditing solution provides four key technology breakthroughs that enable faster and more effective audit preparation:

- **Agentless Architecture** — Because it does not require the installation of software agents on devices, nCircle Configuration Compliance Manager can monitor a wide variety of systems not typically supported by standard agent-based applications, such as routers, switches, and firewalls and addition to mobile devices and can be made operational by a small team in a matter of hours. Configuration Compliance Manager can even conduct file integrity monitoring without the use of agents.
- **Integrated Policy Engine and Rich Policy Library** — nCircle Configuration Compliance Manager comes with a rich library of pre-built policies, including prescriptive policies from NIST, CIS and Microsoft and regulatory policies including PCI, Sarbanes-Oxley, and HIPAA. The policy engine enables customizing these policies for an organization's particular needs or creating new policies. With just one click, you can even create a policy based on the configuration of a particular system (such as the "gold" image for new servers).



*nCircle Configuration Compliance Manager provides pre-built policies and benchmarks from NIST, CIS, and Microsoft, and also supports customized, user-generated policies*

- **Configuration Change Analysis** — nCircle Configuration Compliance Manager not only enumerates the configuration of IT systems in detail, it identifies how these configurations are changing and whether these changes require attention. When Configuration Compliance Manager identifies a compliance deviation, it can escalate the issue in a variety of ways, including alerting administrators or opening a trouble ticket. Further, all configuration changes are recorded for audit and control purposes.
- **Open Architecture** — nCircle Configuration Compliance Manager can operate stand-alone or as part of a federated CMDB, such as the HP Universal CMDB and the IBM Tivoli CCMDB. nCircle Configuration Compliance Manager is the authoritative source of policy and compliance data for the HP Universal CMDB, and it provides the sole source of policy and compliance status into the IBM Tivoli CCMDB.

## About nCircle Solutions

nCircle's agentless security risk and compliance management solutions discover all IP enabled devices on an organization's global network and collect extensive configuration and vulnerability data to enable configuration auditing, vulnerability management, and file integrity monitoring. Utilizing advanced analytics and objective risk metrics, nCircle solutions distill the wealth of discovered information into actionable data that helps enterprises address compliance challenges for regulations such as PCI and Sarbanes-Oxley. nCircle's comprehensive agentless solutions help enterprises meet the goal of achieving both increased security and compliance.

## About nCircle

nCircle is the leading provider of automated security and compliance auditing solutions. More than 4,000 enterprises, government agencies and service providers around the world rely on nCircle's proactive solutions to manage and reduce security risk and achieve compliance on their networks. nCircle has won numerous awards for growth, innovation, customer satisfaction and technology leadership. nCircle is headquartered in San Francisco, CA, with regional offices throughout the United States and in London and Toronto. Additional information about nCircle is available at [www.ncircle.com](http://www.ncircle.com)



**nCircle**

nCircle  
info@ncircle.com  
[www.ncircle.com](http://www.ncircle.com)

**Corporate Headquarters**  
101 Second Street, Suite 400  
San Francisco, CA 94105  
Phone: +1 888 464 2900  
Fax: +1 415 625 5982

**Europe Headquarters**  
Venture House  
Arlington Square  
Downshire Way  
Bracknell  
RG12 1WA  
United Kingdom  
Phone: +44 (0) 1344 742829  
Fax: +44 (0) 1344 741001  
emea@ncircle.com